

TOOTH WHITENING

Dr. Brett Dorney, Pymble NSW

A difficult case of fluorosis or internal tooth staining on a 26 year old patient that required two in-surgery power bleaching appointments one month apart. GC Tooth Mousse was recommended prior to treatment to reduce sensitivity often experienced during this procedure and to give an improved final result.

In between appointments GC Tooth Mousse was applied twice daily.



Before whitening



Immediately after the initial whitening appointment with heavy white staining on teeth still apparent



Two weeks after final whitening appointment and twice daily application of GC Tooth Mousse

GC TOOTH MOUSSE FOR TOOTH WEAR

Prof. Ian Meyers, University of Queensland

Jason is a 34 year old electrician:

- Generally healthy – no medications
- Moderate heartburn/gastric reflux
- Smokes 15 cigarettes per day
- Drinks two cups of tea per day
- Bike rides 40km six days per week
- Insufficient water intake
- Moderate consumption of beer and wine
- Lower front teeth are often sensitive
- Nighttime grinding of the teeth in past
- Some jaw clicking on opening



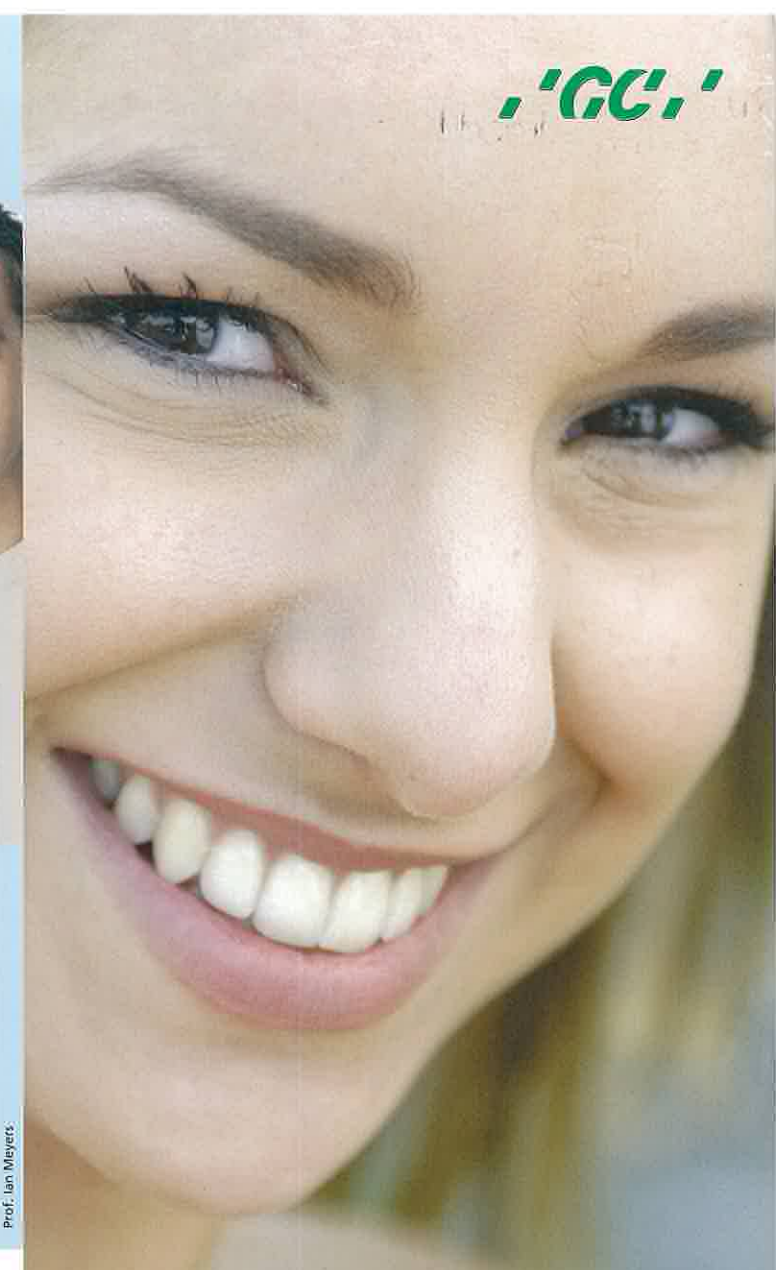
Diagnosis

Jason has considerable tooth wear. The main problem is not enough saliva being regularly produced. Saliva protects teeth and a lack of it will accelerate problems. Dehydration has made matters worse and insufficient water intake during the day has caused a fluid imbalance.



Treatment

Applying GC Tooth Mousse twice daily and using a high fluoride toothpaste (5000 ppm) helped stabilize Jason's problems. Several of Jason's teeth were then filled and crowned to improve looks and function. Future review and maintenance are essential to ensure Jason continues to benefit from his home care treatment.



'GC'

GC Asia Dental Pte. Ltd
Changi Logistics Centre
19 Loyang Way #06-27
Singapore 508724
T +65 6546 7588
F +65 6546 7577
www.gcasia.info



©GC Corporation 2008

GC Tooth Mousse contains RECALDENT™ (CPP-ACP), a unique ingredient developed at The School of Dental Science, The University of Melbourne, Victoria, Australia. RECALDENT is a trademark used under license. CPP-ACP technology has related patents or patents pending in Australia, NZ, Europe, Canada and USA. RECALDENT™ (CPP-ACP) is derived from milk protein and should not be used by people with milk protein allergies.

**GC Tooth Mousse
CAN HELP YOUR TEETH
THROUGHOUT YOUR LIFE**

CHILDREN

ADULTS

SENIORS

Since its introduction, GC Tooth Mousse has quickly become a firm favourite as a topical coating for teeth with a myriad of uses.

GC Tooth Mousse is a water based, sugar free creme containing RECALDENT™ (CPP-ACP), which is derived from cows' milk. This booklet shows just some of the applications for GC Tooth Mousse.

For more information, please seek professional advice.



So easy to use – just apply with your finger like this.



GC TOOTH MOUSSE FOR TOOTH SENSITIVITY

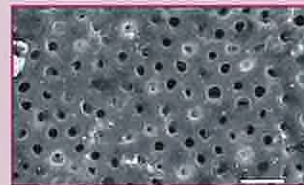
Prof. Laurie Walsh, University of Queensland

Sensitivity in teeth comes from open dentine tubules, and is particularly prevalent when the patient suffers from gastric reflux. The reflux causes repeated exposure to gastric contents which prevents any protective organic or inorganic surface film from forming to cover the tubules.

GC Tooth Mousse exerts a rapid desensitizing effect through immediate protein binding followed by the deposition of calcium and phosphate compounds within exposed dentine tubules.

This patient required treatment for severe dental hypersensitivity affecting many teeth. She had undiagnosed gastric reflux and considerable destruction of the upper front teeth had occurred from the erosive effects of stomach hydrochloric acid. The lower front teeth displayed gum related erosion lesions which also were hypersensitive.

After recommending a nightly application of GC Tooth Mousse and a home care program using a sodium bicarbonate mouthrinse to neutralize the gastric acid, the sensitivity problem diminished rapidly and the hardness of the exposed dentine increased. The teeth were then restored with a tooth coloured filling material. Three months later the teeth were reviewed – they were no longer sensitive and the patient was comfortable and able to eat normally.



Exposed dentine shows open dentinal tubules



Erosive effects of hydrochloric acid



Gum related erosion lesions



Three month post treatment review

Prof. L. Walsh

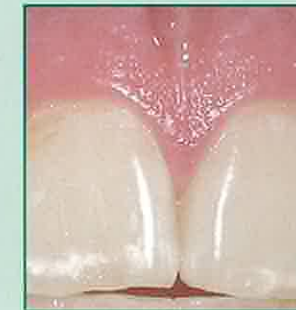
GC TOOTH MOUSSE FOR MILD FLUOROSIS

Prof. Laurie Walsh, University of Queensland

In many cases of mild fluorosis, a single non-surgical treatment sequence of etching/microabrasion followed by GC Tooth Mousse can achieve the desired result. The visual effect occurs through a slow chemical reaction, and thus patients should expect to see changes over several weeks rather than instantly.



Darryl is completing his university studies and his lifestyle poses a number of challenges for effective remineralization. He has regular sporting involvements with competitive rowing, which places him at risk from dental erosion should his fluid balance situation not be kept in check. Darryl's teeth have the benefit of being formed with good fluoride exposure (in his case from fluoride tablets), and he has remained caries free to this point. Because Darryl's enamel has higher acid resistance, he should be less vulnerable to tooth wear from erosive factors such as dehydration and the intake of acidic sports drinks, although he will, of course, still be prone to wear and attrition in the normal way. There is strong evidence that erosion is less common in patients who have good fluoride exposure.



The effect of the treatment on the front teeth as shown.

Prof. L. Walsh